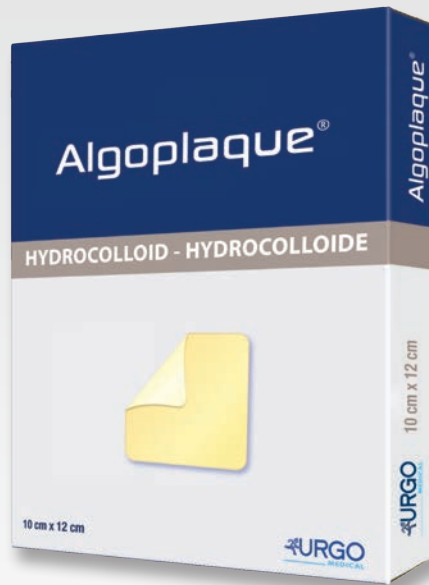


Algoplaque

STERILE HYDROCOLLOID DRESSINGS



Algoplaque
Border



Algoplaque
Sacrum



FOR MODERATE TO HEAVILY EXUDING WOUNDS WITH HEALTHY SURROUNDING SKIN

- Providing a moist environment
- Waterproof and bacteriaproof
- Transparent for better wound monitoring

Algoplaque

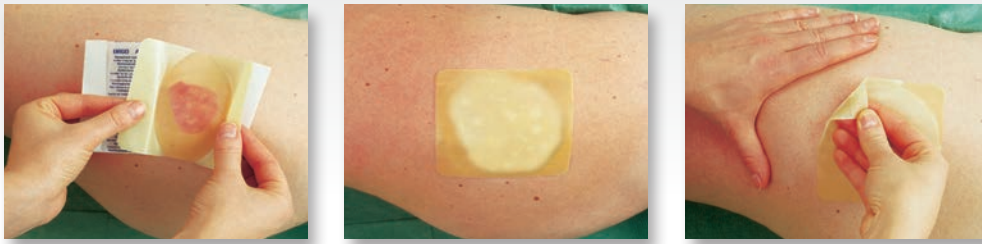
Supplied in boxes of individually pouched and sterile dressings, ready to use

Algoplaque sizes: 10x10 cm / 15x15 cm / 20x20 cm

Algoplaque Border size: 14x14 cm

Algoplaque Sacrum Size: 14x16 cm

Algoplaque



DESCRIPTION

- Sterile hydrocolloid dressing. It is also available in Sacrum and Border versions.

COMPOSITION: the inner layer is composed of hydrocolloid particles (carboxymethylcellulose) incorporated in an elastomer mesh. The outer layer is a polyurethane backing.

PROPERTIES

- In contact with the wound, hydrocolloids from **Algoplaque** and **Algoplaque Border/Sacrum** absorb progressively the exudate, form a moist gel and create the conditions that favour the healing process regarding moisture, temperature and pH. This non-adherent gel avoids that the wound is damaged when the dressing is removed.
- The great conformability and adhesiveness of **Algoplaque Border** make it ideal for covering wounds in awkward areas (ulcers in the trochanter region or heel region), preventing loosening due to friction or in case of incontinence.
- **Algoplaque** and **Algoplaque Border/Sacrum** are transparent allowing the wound and the gel to be continuously monitored.
- **Algoplaque** and **Algoplaque Border/Sacrum** dressings are permeable to air, waterproof and bacteriaproof. These properties allow baths or showers, protect the wound from external contaminants, and enable gas exchanges, which favours the draining of exudate.

INDICATIONS

- **Algoplaque** is indicated for the local treatment of leg ulcers and pressure ulcers
- **Algoplaque Border** is indicated for the local treatment of wounds in difficult areas (pressure ulcers in the trochanter or heel region) which are subject to frictional forces.
- **Algoplaque Sacrum** is indicated for the local treatment of pressure ulcers, especially in the sacrum area.

DIRECTIONS FOR USE

METHOD OF USE

Preparation of the wound:

- Clean the wound with saline solution. Dry carefully the surrounding skin using a sterile compress.

Application of the dressing:

- Remove the protective films,
- Apply the dressing without stretching to the wound taking care not to touch the adhesive area with your fingers.
- Apply the gently to the wound pressing firmly around the edges.
- To apply **Algoplaque Sacrum**, smooth the dressing into place ensuring the narrow part of the dressing is pointing towards the buttocks.
- The adhesive edge of **Algoplaque Sacrum** and **Algoplaque Border** means that the dressing does not have to be reinforced with a secondary dressing

Changing the dressing:

- On a clean wound that is free from infection, and where all necrotic tissue has been removed, **Algoplaque** and **Algoplaque Border/Sacrum** can be left in place for several days (3-4 days).
- For a wound at the end of desloughing phase where sloughy tissue remains **Algoplaque** and **Algoplaque Border/Sacrum** needs to be changed more frequently (every 1 to 2 days).
- In a heavily exuding wound, if leakage occurs around the edge of the dressing it should be changed immediately.
- **Algoplaque** and **Algoplaque Border/Sacrum** dressings should be removed tangentially to the wound for painless removal.
- When removing the dressing, the bed of cutaneous ulcer may be covered with a gelatinous coating which will be removed easily simply by cleaning.

PRECAUTIONS

- The use of **Algoplaque** for leg ulcers does not replace the need for compression treatment (shockings or bandages) where prescribed.
- The use of **Algoplaque** or **Algoplaque Border** on pressure ulcers does not replace the need for normal nursing care.
- In the case of a deep wound, the use of **Algoplaque Paste** reduces the frequency of dressing change of **Algoplaque** provided that the paste does not fill the wound completely.
- Do not use if the sterile protection has been damaged.
- Single use sterile individual packaging: re-using a single use dressing may lead to risks of infection.
- Store **Algoplaque** and **Algoplaque Border/Sacrum** dressings flat.

CONTRAINDICATIONS

- Infected wounds.

READ THE LEAFLET BEFORE USE.